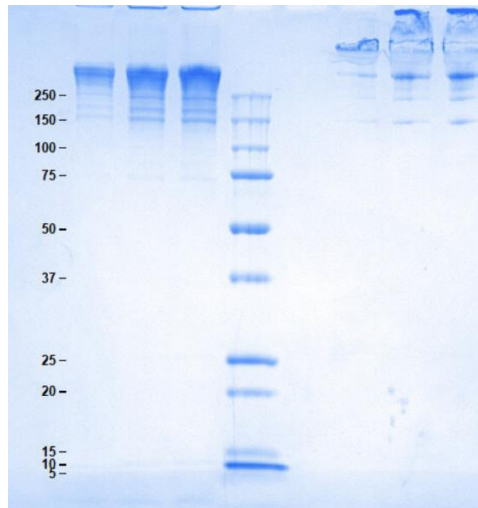


Gel Scan of Representative Lot Lipoprotein a, Lp(a) ART Catalog No. 12-16-121601



SDS-PAGE

12% Bis-Tris gel, 1x MES

1. Lipoprotein a, Lp(a) 1 µg (Heated/Reduced)
2. Lipoprotein a, Lp(a) 3 µg (Heated/Reduced)
3. Lipoprotein a, Lp(a) 5 µg (Heated/Reduced)
4. Standard
5. Blank
6. Lipoprotein a, Lp(a) 1 µg (Not Heated/Non-Reduced)
7. Lipoprotein a, Lp(a) 3 µg (Not Heated/Non-Reduced)
8. Lipoprotein a, Lp(a) 5 µg (Not Heated/Non-Reduced)

Protein Determination:

Pierce 660 nm protein assay

Considerations:

Storage Conditions: 2 – 6 °C; Do not freeze; Store away from light

Stability: ≥ 6 months from the production date.

Molecular Weight:

280,000 - 700,000 Da

Buffer:

1X PBS with 0.05% sodium azide

Physical Specifications:

Form: Liquid

Purity: Essentially free of other plasma lipoproteins as determined by electrophoresis using a SPIFE

Vis Cholesterol gel kit for lipids and Coomassie Blue for proteins. ≥ 95% of total lipoprotein content by electrophoresis. SDS-PAGE shows minor Apo-A1 contaminant

Your Distributor

ORDERING
Tel.: +49 40 4320 8448 - 0
order@active-bioscience.de
www.active-bioscience.de



ACTIVE BIOSCIENCE
PROTEINS · CELLS · ANTIBODIES

TECHNICAL SUPPORT
Tel.: +49 40 4320 8448 - 11
support@active-bioscience.de

Active Bioscience GmbH
Oberaltenallee 8
D-22081 Hamburg
HRB 98170 Amtsgericht Hamburg

Product Datasheet

Product:	Lipoprotein a, Lp(a)
Catalog #:	12-16-121601
Form:	Liquid
Available Packaging:	100 µg and 1 mg. Larger aliquots are available upon request.
Buffer:	1X PBS with 0.05% NaN ₃
Purity:	Essentially free of other plasma lipoproteins as determined by electrophoresis using a SPIFE Vis Cholesterol gel kit for lipids and Coomassie Blue for proteins. ≥ 95% of total lipoprotein content by electrophoresis. SDS-PAGE shows minor Apo-A1 contaminant.
Molecular Weight:	280,000 – 700,000 Da
Protein Determination:	Pierce 660 nm protein assay
Density:	1.063 – 1.10 g/mL
Composition:	60 – 65% Lipid; 27% Protein; 8% Carbohydrate.
Storage/Handling:	2 – 6 °C; Do not freeze; Store away from light
Stability:	≥ 6 months from the production date.
Source:	Human Plasma
Testing:	Donor material is obtained from suppliers that perform a comprehensive infectious disease screening panel. Each unit of plasma is tested by the supplier and found non-reactive for HIV-1/2, Hepatitis B surface antigen (HBsAg), Hepatitis C (HCV), Hepatitis A (HAV), and syphilis (RPR). Documentation of testing is maintained and is available upon request.

Product Link: <https://www.athensresearch.com/products/all/lipoprotein-a-lpa-human-plasma>

FOR RESEARCH OR FURTHER MANUFACTURING USE ONLY

Your Distributor

ORDERING
Tel.: +49 40 4320 8448 - 0
order@active-bioscience.de
www.active-bioscience.de



ACTIVE BIOSCIENCE
PROTEINS · CELLS · ANTIBODIES

TECHNICAL SUPPORT
Tel.: +49 40 4320 8448 - 11
support@active-bioscience.de

Active Bioscience GmbH
Oberaltenallee 8
D-22081 Hamburg
HRB 98170 Amtsgericht Hamburg