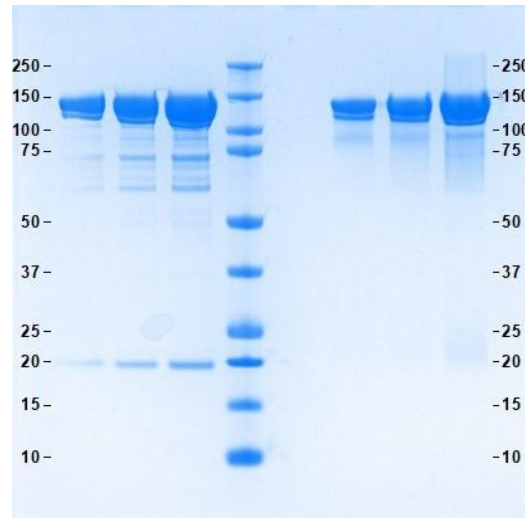


## Gel Scan of Representative Lot Ceruloplasmin

ART Catalog No. 16-16-030518



### SDS-PAGE

4-12% Bis-Tris gel

1. Ceruloplasmin- 5 µg (Heated/Reduced)
2. Ceruloplasmin- 10 µg (Heated/Reduced)
3. Ceruloplasmin- 20 µg (Heated/Reduced)
4. Standard
5. Blank
6. Ceruloplasmin- 5 µg (Not Heated/Non-Reduced)
7. Ceruloplasmin- 10 µg (Not Heated/Non-Reduced)
8. Ceruloplasmin- 20 µg (Not Heated/Non-Reduced)

### Protein Determination:

Extinction Coefficient (E) = 1.50 (0.1% at 280 nm, 1cm pathway)

### Considerations:

Storage Conditions: ≤ -20 °C

Stability: > 1 year

### Molecular Weight:

132,000 Da

### Buffer:

50 mM K<sub>2</sub>PO<sub>4</sub>, pH 6.8, 100 mM KCl and 20 mM E-amino-n-caproic acid with 5 mM EDTA

### Physical Specifications:

Form: Lyophilized

Purity: ≥ 95% by SDS-Page

## Your Distributor

ORDERING  
Tel.: +49 40 4320 8448 - 0  
order@active-bioscience.de  
www.active-bioscience.de



**ACTIVE BIOSCIENCE**  
PROTEINS · CELLS · ANTIBODIES

TECHNICAL SUPPORT  
Tel.: +49 40 4320 8448 - 11  
support@active-bioscience.de

Active Bioscience GmbH  
Oberaltenallee 8  
D-22081 Hamburg  
HRB 98170 Amtsgericht Hamburg

## Product Datasheet

<b>Product:</b>	<b>Ceruloplasmin</b>
<b>Catalog #:</b>	16-16-030518
<b>Form:</b>	Lyophilized
<b>Available Packaging:</b>	1 and 5 mg. Larger aliquots available upon request.
<b>Buffer:</b>	Lyophilized from 50 mM potassium phosphate, pH 6.8, 100 mM KCl and 20 mM EACA + 5 mM EDTA.
<b>Purity:</b>	≥ 95% by SDS-PAGE
<b>Molecular Weight:</b>	132,000 Da
<b>Protein Determination:</b>	Extinction Coefficient (E) = 1.50 (0.1% at 280 nm, 1 cm pathway)
<b>Storage/Handling:</b>	≤ -20 °C
<b>Stability:</b>	> 1 year
<b>Source:</b>	Human Plasma
<b>Testing:</b>	Donor material is obtained from suppliers that perform a comprehensive infectious disease screening panel. Each unit of plasma is tested by the supplier and found non-reactive for HIV-1/2, Hepatitis B surface antigen (HBsAg), Hepatitis C (HCV), Hepatitis A (HAV), and syphilis (RPR). Documentation of testing is maintained and is available upon request.

**Product Link:** <https://www.athensresearch.com/products/all/ceruloplasmin-human-plasma>

**FOR RESEARCH OR FURTHER MANUFACTURING USE ONLY**

---

### Your Distributor

ORDERING  
Tel.: +49 40 4320 8448 - 0  
[order@active-bioscience.de](mailto:order@active-bioscience.de)  
[www.active-bioscience.de](http://www.active-bioscience.de)



**ACTIVE BIOSCIENCE**  
PROTEINS · CELLS · ANTIBODIES

TECHNICAL SUPPORT  
Tel.: +49 40 4320 8448 - 11  
[support@active-bioscience.de](mailto:support@active-bioscience.de)

Active Bioscience GmbH  
Oberaltenallee 8  
D-22081 Hamburg  
HRB 98170 Amtsgericht Hamburg