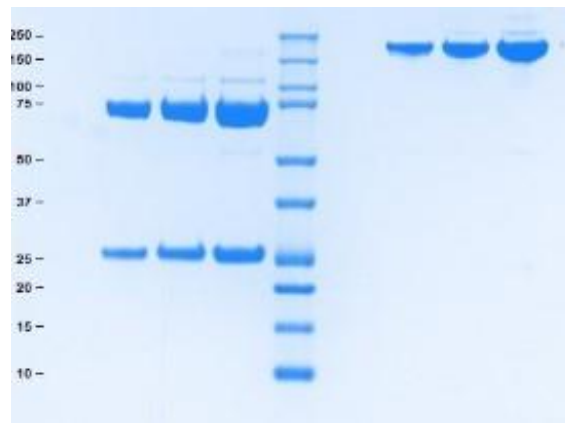


Gel Scan of Representative Lot Immunoglobulin E (IgE), Lambda

ART Catalog No. 16-16-090705-M-Lambda



SDS-PAGE

4-12% Bis-Tris gel

1. Immunoglobulin E (IgE), Lambda 5 µg (Heated/Reduced)
2. Immunoglobulin E (IgE), Lambda 10 µg (Heated/Reduced)
3. Immunoglobulin E (IgE), Lambda 20 µg (Heated/Reduced)
4. Standard
5. Blank
6. Immunoglobulin E (IgE), Lambda 5 µg (Not Heated/Non-Reduced)
7. Immunoglobulin E (IgE), Lambda 10 µg (Not Heated/Non-Reduced)
8. Immunoglobulin E (IgE), Lambda 20 µg (Not Heated/Non-Reduced)

Protein Determination:

Extinction Coefficient (E) = 1.46 (0.1% at 280 nm,
1 cm pathway)

Considerations:

Storage Conditions: ≤ -70 °C (Avoid freeze/thaw
cycles)
Stability: > 1 year

Molecular Weight:

190,000 Da

Buffer:

Frozen in 15 mM potassium phosphate, pH 7.4,
with 150 mM NaCl and 0.05% sodium azide.

Physical Specifications:

Form: Frozen
Purity: ≥ 95% by SDS-PAGE

Your Distributor

ORDERING
Tel.: +49 40 4320 8448 - 0
order@active-bioscience.de
www.active-bioscience.de



ACTIVE BIOSCIENCE
 PROTEINS · CELLS · ANTIBODIES

TECHNICAL SUPPORT
Tel.: +49 40 4320 8448 - 11
support@active-bioscience.de

Active Bioscience GmbH
Oberaltenallee 8
D-22081 Hamburg
HRB 98170 Amtsgericht Hamburg

Product Datasheet

Product:	Immunoglobulin E (IgE), Lambda
Catalog #:	16-16-090705-M-Lambda
Form:	Frozen
Available Packaging:	100 µg and 1 mg. Larger aliquots are available upon request.
Buffer:	Frozen in 15 mM potassium phosphate, pH 7.4, with 150 mM NaCl and 0.05% NaN ₃ .
Purity:	≥ 95% by SDS-PAGE
Molecular Weight:	190,000 Da
Protein Determination:	Extinction Coefficient (E) = 1.46 (0.1% at 280 nm, 1 cm pathway)
Storage/Handling:	≤ -70 °C (Avoid freeze/thaw cycles)
Stability:	> 1 year
Source:	Human Myeloma Plasma, Lambda
Testing:	Donor material is obtained from suppliers that perform a comprehensive infectious disease screening panel. This material is prepared using donor units that have been screened individually and found non-reactive for HIV-1/2, Hepatitis B surface antigen (HBsAg), and Hepatitis C (HCV) using validated methods. Detailed testing records are available upon request.

Product Link: <https://www.athensresearch.com/products/all/immunoglobulin-e-human-myeloma-plasma-lambda>

FOR RESEARCH OR FURTHER MANUFACTURING USE ONLY

Your Distributor

ORDERING
Tel.: +49 40 4320 8448 - 0
order@active-bioscience.de
www.active-bioscience.de



ACTIVE BIOSCIENCE
PROTEINS · CELLS · ANTIBODIES

TECHNICAL SUPPORT
Tel.: +49 40 4320 8448 - 11
support@active-bioscience.de

Active Bioscience GmbH
Oberaltenallee 8
D-22081 Hamburg
HRB 98170 Amtsgericht Hamburg