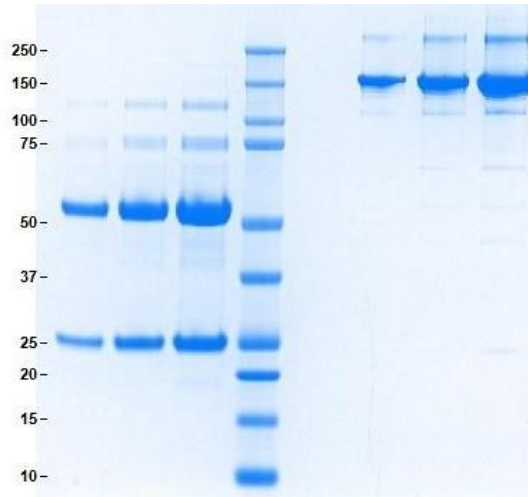


Gel Scan of Representative Lot Immunoglobulin G1 (IgG1)

ART Catalog No. 16-16-090707-1M



SDS-PAGE

4-12% Bis-Tris gel, 1x MES

1. Immunoglobulin G1 (IgG1) 5 µg (Heated/Reduced)
2. Immunoglobulin G1 (IgG1) 10 µg (Heated/Reduced)
3. Immunoglobulin G1 (IgG1) 20 µg (Heated/Reduced)
4. Standard
5. Blank
6. Immunoglobulin G1 (IgG1) 5 µg (Not Heated/Non-Reduced)
7. Immunoglobulin G1 (IgG1) 10 µg (Not Heated/Non-Reduced)
8. Immunoglobulin G1 (IgG1) 20 µg (Not Heated/Non-Reduced)

Protein Determination:

Extinction Coefficient (E) = 1.36 (0.1% at 280 nm, 1 cm pathway)

Considerations:

Storage Conditions: ≤ -20 °C
Stability: > 1 year

Molecular Weight:

146,000 Da

Buffer:

Frozen in 20 mM sodium phosphate, pH 7.4, with 150 mM NaCl and 0.05% sodium azide.

Physical Specifications:

Form: Frozen
Purity: ≥ 95% by SDS-PAGE

Your Distributor

ORDERING
Tel.: +49 40 4320 8448 - 0
order@active-bioscience.de
www.active-bioscience.de



ACTIVE BIOSCIENCE
PROTEINS · CELLS · ANTIBODIES

TECHNICAL SUPPORT
Tel.: +49 40 4320 8448 - 11
support@active-bioscience.de

Active Bioscience GmbH
Oberaltenallee 8
D-22081 Hamburg
HRB 98170 Amtsgericht Hamburg

Product Datasheet

Product:	Immunoglobulin G1 (IgG1)
Catalog #:	16-16-090707-1M
Form:	Frozen
Available Packaging:	1, 5, and 10 mg. Larger aliquots are available upon request.
Buffer:	Frozen in 20 mM sodium phosphate, pH 7.4, with 150 mM NaCl and 0.05% NaN ₃ .
Purity:	≥ 95% by SDS-PAGE
Molecular Weight:	146,000 Da
Protein Determination:	Extinction Coefficient (E) = 1.36 (0.1% at 280 nm, 1 cm pathway)
Storage/Handling:	≤ -20 °C
Stability:	> 1 year
Source:	Human Myeloma Plasma
Testing:	Donor material is obtained from suppliers that perform a comprehensive infectious disease screening panel. This material is prepared using donor units that have been screened individually and found non-reactive for HIV-1/2, Hepatitis B surface antigen (HBsAg), and Hepatitis C (HCV) using validated methods. Detailed testing records are available upon request.

Product Link: <https://www.athensresearch.com/products/all/immunoglobulin-g1-human-myeloma-plasma-igg1>

FOR RESEARCH OR FURTHER MANUFACTURING USE ONLY

Your Distributor

ORDERING
Tel.: +49 40 4320 8448 - 0
order@active-bioscience.de
www.active-bioscience.de



ACTIVE BIOSCIENCE
PROTEINS · CELLS · ANTIBODIES

TECHNICAL SUPPORT
Tel.: +49 40 4320 8448 - 11
support@active-bioscience.de

Active Bioscience GmbH
Oberaltenallee 8
D-22081 Hamburg
HRB 98170 Amtsgericht Hamburg