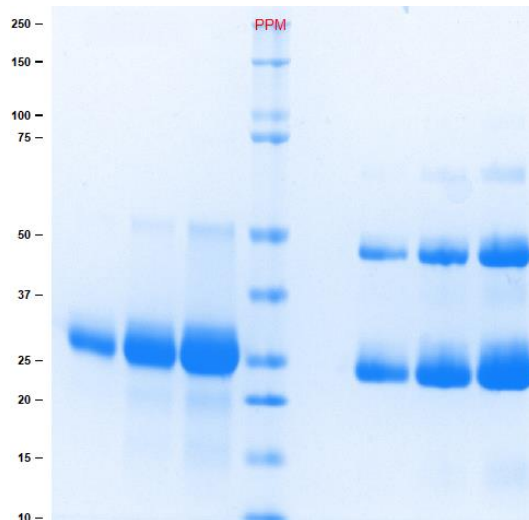


Gel Scan of Representative Lot Immunoglobulin G (IgG), Light Chain

ART Catalog No. 16-16-090707-LC



SDS-PAGE

4-12% Bis-Tris gel, 1x MES

1. Immunoglobulin G (IgG), Light Chain 5 µg (Heated/Reduced)
2. Immunoglobulin G (IgG), Light Chain 10 µg (Heated/Reduced)
3. Immunoglobulin G (IgG), Light Chain 20 µg (Heated/Reduced)
4. Standard
5. Blank
6. Immunoglobulin G (IgG), Light Chain 5 µg (Not Heated/Non-Reduced)
7. Immunoglobulin G (IgG), Light Chain 10 µg (Not Heated/Non-Reduced)
8. Immunoglobulin G (IgG), Light Chain 20 µg (Not Heated/Non-Reduced)

Protein Determination:

Extinction Coefficient (E) = 1.45 (0.1% at 280 nm,
1 cm pathway)

Molecular Weight:

23,000 Da

Physical Specifications:

Form: Frozen

Purity: ≥ 95% by SDS-PAGE

Considerations:

Storage Conditions: ≤ -20 °C

Stability: > 1 year

Buffer:

Frozen in 20 mM sodium phosphate, pH 7.4, with
150 mM NaCl and 0.05% sodium azide

Your Distributor

ORDERING
Tel.: +49 40 4320 8448 - 0
order@active-bioscience.de
www.active-bioscience.de



ACTIVE BIOSCIENCE

PROTEINS · CELLS · ANTIBODIES

TECHNICAL SUPPORT
Tel.: +49 40 4320 8448 - 11
support@active-bioscience.de

Active Bioscience GmbH
Oberaltenallee 8
D-22081 Hamburg
HRB 98170 Amtsgericht Hamburg

Product Datasheet

Product:	Immunoglobulin G (IgG), Light Chain
Catalog #:	16-16-090707-LC
Form:	Frozen
Available Packaging:	1 mg. Larger aliquots are available upon request.
Buffer:	Frozen in 20 mM sodium phosphate, pH 7.4, with 150 mM NaCl and 0.05% NaN ₃
Purity:	≥ 95% by SDS-PAGE
Molecular Weight:	23,000 Da
Protein Determination:	Extinction Coefficient (E) = 1.45 (0.1% at 280 nm, 1 cm pathway)
Storage/Handling:	≤ -20 °C
Stability:	> 1 year
Source:	Human Plasma
Testing:	Donor material is obtained from suppliers that perform a comprehensive infectious disease screening panel. Each unit of plasma is tested by the supplier and found non-reactive for HIV-1/2, Hepatitis B surface antigen (HBsAg), Hepatitis C (HCV), Hepatitis A (HAV), and syphilis (RPR). Documentation of testing is maintained and is available upon request.

Product Link: <https://www.athensresearch.com/products/all/immunoglobulin-g-igg-light-chain-human-plasma>

FOR RESEARCH OR FURTHER MANUFACTURING USE ONLY

Your Distributor

ORDERING
Tel.: +49 40 4320 8448 - 0
order@active-bioscience.de
www.active-bioscience.de



ACTIVE BIOSCIENCE
PROTEINS · CELLS · ANTIBODIES

TECHNICAL SUPPORT
Tel.: +49 40 4320 8448 - 11
support@active-bioscience.de

Active Bioscience GmbH
Oberaltenallee 8
D-22081 Hamburg
HRB 98170 Amtsgericht Hamburg