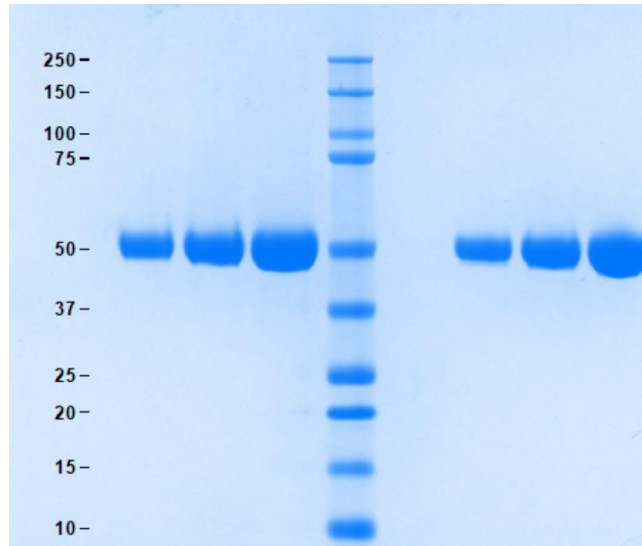


## Gel Scan of Representative Lot Leucine-rich Alpha 2 Glycoprotein-1 (LRG1)

ART Catalog No. 16-16-121807



### SDS-PAGE

4-12% Bis-Tris gel, 1x MES

1. Leucine-rich Alpha 2 Glycoprotein-1 (LRG1) 5 µg (Heated/Reduced)
2. Leucine-rich Alpha 2 Glycoprotein-1 (LRG1) 10 µg (Heated/Reduced)
3. Leucine-rich Alpha 2 Glycoprotein-1 (LRG1) 20 µg (Heated/Reduced)
4. MW Standard
5. Blank
6. Leucine-rich Alpha 2 Glycoprotein-1 (LRG1) 5 µg (Non-Heated/Non-Reduced)
7. Leucine-rich Alpha 2 Glycoprotein-1 (LRG1) 10 µg (Non-Heated/Non-Reduced)
8. Leucine-rich Alpha 2 Glycoprotein-1 (LRG1) 20 µg (Non-Heated/Non-Reduced)

### Protein Determination:

Extinction Coefficient (E) = 0.70 (0.1% at 280 nm, 1 cm pathway)

### Considerations:

Storage Conditions: ≤ -20 °C  
Stability: > 1 year

### Molecular Weight:

50,000 Da

### Buffer:

Lyophilized from 20 mM Tris, 20 mM NaCl, pH 7.5

### Physical Specifications:

Form: Lyophilized  
Purity: ≥ 95% by SDS-PAGE. Positive reaction to anti-LRG1 on Western Blot.

## Your Distributor

ORDERING  
Tel.: +49 40 4320 8448 - 0  
order@active-bioscience.de  
www.active-bioscience.de



**ACTIVE BIOSCIENCE**  
PROTEINS · CELLS · ANTIBODIES

TECHNICAL SUPPORT  
Tel.: +49 40 4320 8448 - 11  
support@active-bioscience.de

Active Bioscience GmbH  
Oberaltenallee 8  
D-22081 Hamburg  
HRB 98170 Amtsgericht Hamburg

## Product Datasheet

<b>Product:</b>	<b>Leucine-rich Alpha 2 Glycoprotein-1 (LRG1)</b>
<b>Catalog #:</b>	16-16-121807
<b>Form:</b>	Lyophilized
<b>Available Packaging:</b>	50 and 100 µg. Larger aliquots available upon request.
<b>Buffer:</b>	Lyophilized from 20 mM Tris, 20 mM NaCl, pH 7.5
<b>Purity:</b>	≥ 95% by SDS-PAGE. Positive reaction to anti-LRG1 on Western Blot.
<b>Molecular Weight:</b>	50,000 Da
<b>Protein Determination:</b>	Extinction Coefficient (E) = 0.70 (0.1% at 280 nm, 1 cm pathway)
<b>Storage/Handling:</b>	≤ -20 °C
<b>Stability:</b>	> 1 year
<b>Source:</b>	Human Plasma
<b>Testing:</b>	Donor material is obtained from suppliers that perform a comprehensive infectious disease screening panel. Each unit of plasma is tested by the supplier and found non-reactive for HIV-1/2, Hepatitis B surface antigen (HBsAg), Hepatitis C (HCV), Hepatitis A (HAV), and syphilis (RPR). Documentation of testing is maintained and is available upon request.

**Product Link:** <https://www.athensresearch.com/products/all/leucine-rich-alpha-2-glycoprotein-lrg1-human-plasma>

**FOR RESEARCH OR FURTHER MANUFACTURING USE ONLY**

---

### Your Distributor

ORDERING  
Tel.: +49 40 4320 8448 - 0  
[order@active-bioscience.de](mailto:order@active-bioscience.de)  
[www.active-bioscience.de](http://www.active-bioscience.de)



**ACTIVE BIOSCIENCE**  
PROTEINS · CELLS · ANTIBODIES

TECHNICAL SUPPORT  
Tel.: +49 40 4320 8448 - 11  
[support@active-bioscience.de](mailto:support@active-bioscience.de)

Active Bioscience GmbH  
Oberaltenallee 8  
D-22081 Hamburg  
HRB 98170 Amtsgericht Hamburg